



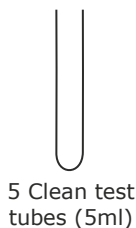
Lab.Test XM

Procedure for canine major* crossmatch. CANINE ONLY

Material provided:



5 XM membranes



5 Clean test tubes (5ml)



5 Blood collector strips



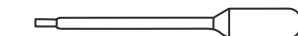
1 white top buffer 1



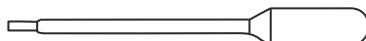
1 green top buffer 2



1 Wash Buffer



5 Small pipettes



5 Large pipettes

Additional material needed: 1 centrifuge

* For minor XM reverse the blood samples : Minor = Donor Serum / Plasma + Recipient RBC and perform the same procedure

N°1: PREPARATION OF BLOOD SAMPLES

(MAJOR = Donor RBC + Recipient serum or plasma)

Recipient

Centrifuge blood tube in order to collect :

- EDTA
 - ACD
 - CPD
 - Plain tube
- Do not use Heparin



Serum or plasma

Centrifuge blood tube. Discard the serum or plasma to collect pRBCs.

D



pRBCs (packed Red Blood Cells)

Donor

Collect blood from blood bag segment.



pRBCs

OR

N°2: XM TEST PROCEDURE

1



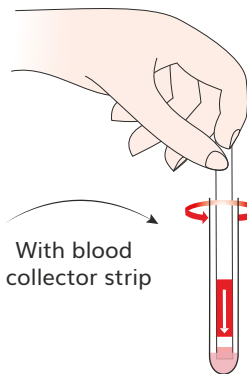
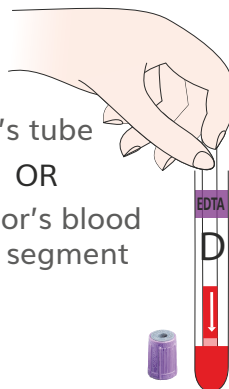
In the clean test tube

2

Donor's tube

OR

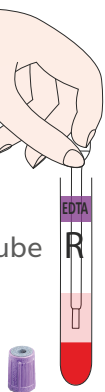
Donor's blood bag segment



With blood collector strip

3

Recipient's tube



With the small pipette

3

of serum or plasma in the test tube

4

Mix gently & incubate 10' at room temperature

10min

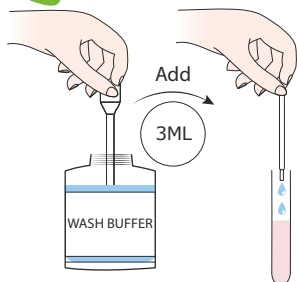


5

Suspension washing procedure

A

With the large pipette



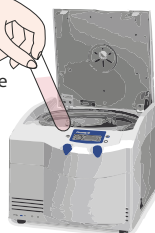
Mix gently

B

Centrifuge

2 min

1000 g



Don't forget the balance tube

C

Discard the supernatant



Suspension washing procedure (x3) **STEP 5 MUST BE DONE 3 TIMES**

6

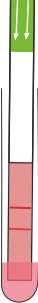


2

Mix gently

7

Insert the XM membrane.



8

Read the result

Up to 5 min

RESULT FORM CANINE
for Crossmatch Test (XM)
Lab.Test XM

Date: _____
Name/N° of owner: _____
Name/N° of recipient: _____
Test performed by: _____
Lab. Test kit number: _____

RESULT ☐ Incompatible XM ☐ Compatible XM

TO INTERPRET YOUR RESULT, CLICK THE MEMBRANE BELOW

☐ XM ☐ XM

Read immediately when testing with incubation 10'

INTERPRETATION OF RESULTS

☐ Incompatible XM ☐ Compatible XM

Alvedia
Alice Veterinary Diagnostics

In case of any other result, please take a picture and send it to email: contact@alvedia.com