

QuickTest DAT

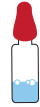
Canine procedure for direct antiglobulin test



Material provided :



1 DAT Quick Test



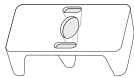
1 Buffer solution



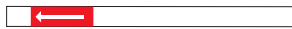
1 Wash Buffer



1 Test tube (1,5ml)



1 Empty well



1 Blood collector strip



1 Small pipette

⚠ FOR RELIABLE RESULTS: USE FRESH COLLECTED BLOOD ONLY (<24 HOURS)

N°1: Red blood cells washing procedure

- 1**

Packed Red Blood cells
Or whole blood

 - EDTA ONLY
- 2**

Fill the tube with
the wash buffer
- 3**

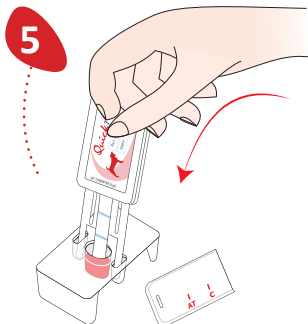
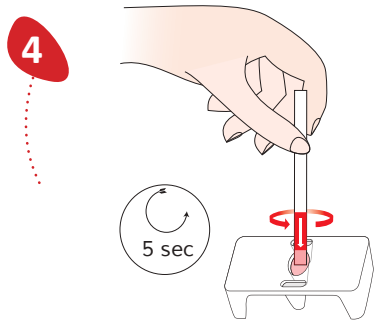
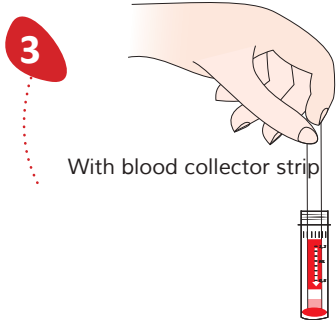
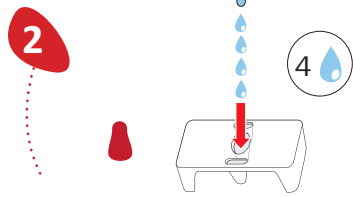
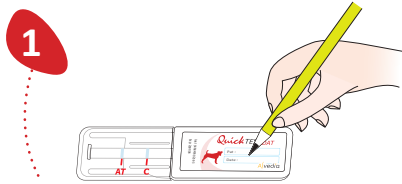
Mix gently
- 4**

Don't forget the
balance tube
(not provided)
- 5**

Discard the
supernatant

**REPEAT STEP 2 TO 5
2 MORE TIME**

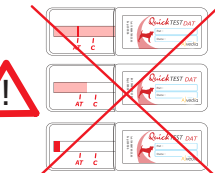
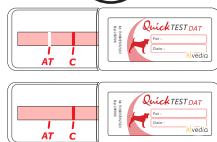
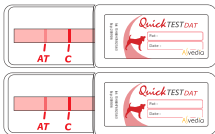
N°2: DAT TEST PROCEDURE



Result Interpretation



C = control



Contact us to ask for the
«Troubleshooting procedure»

The AT test line will always be weaker than the control line