



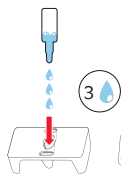
QuickTest BT Ca

Equine procedure for blood typing test

1



2



3



3



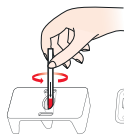
10 μ L

Packed Red Blood cells
Or whole blood

- EDTA
- ACD
- CPD

Do not use Heparin

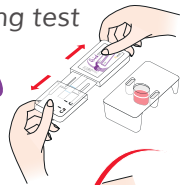
4



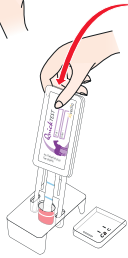
8



5



6



Wait until complete migration

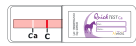
2 to 4 min



Read immediately after testing



C = control



Weak line



Contact us to ask for the «Troubleshooting procedure»